

# BINOCULARS POWERED BY AI – ARE YOU KIDDING?



SEE *THE* UNSEEN



SWAROVSKI  
OPTIK

# WHY EMBED AI ON BINOCULARS?



# USER JOURNEY



# ASSUMPTIONS



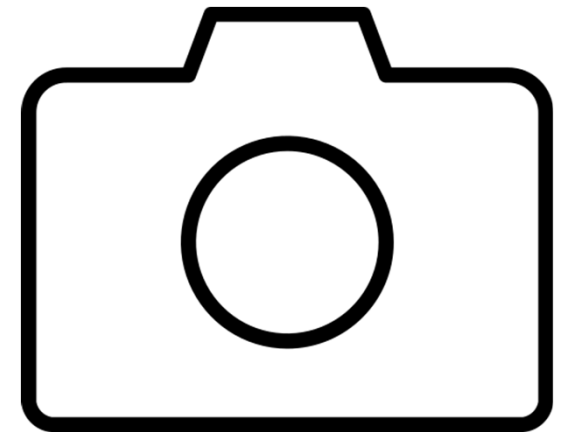
# WHAT IS NEEDED?



+



+



# CHALLENGES



Oh WOW  
it is 9...



# 1ST APPROACH



# GOALS



Small birds identifiable at a distance of 50 m



7000 bird species globally

ID process should be running offline



At least 200 IDs with one battery charge

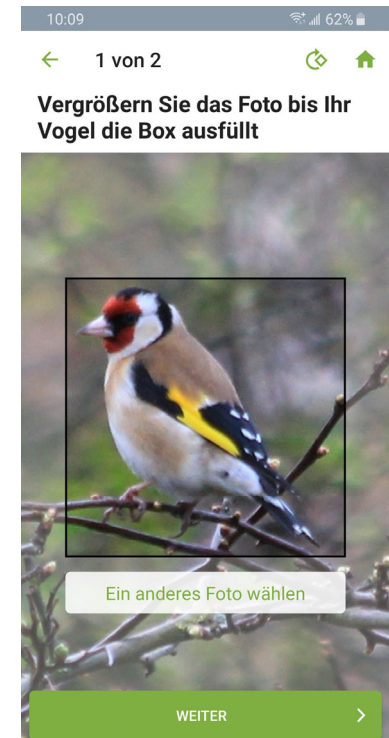


ID result should be shown within less than 1.8 seconds



86% correct results if picture sharp, well-balanced exposure, neutral coloring, ...

**How to transfer the workflow of the Merlin App to binoculars?**







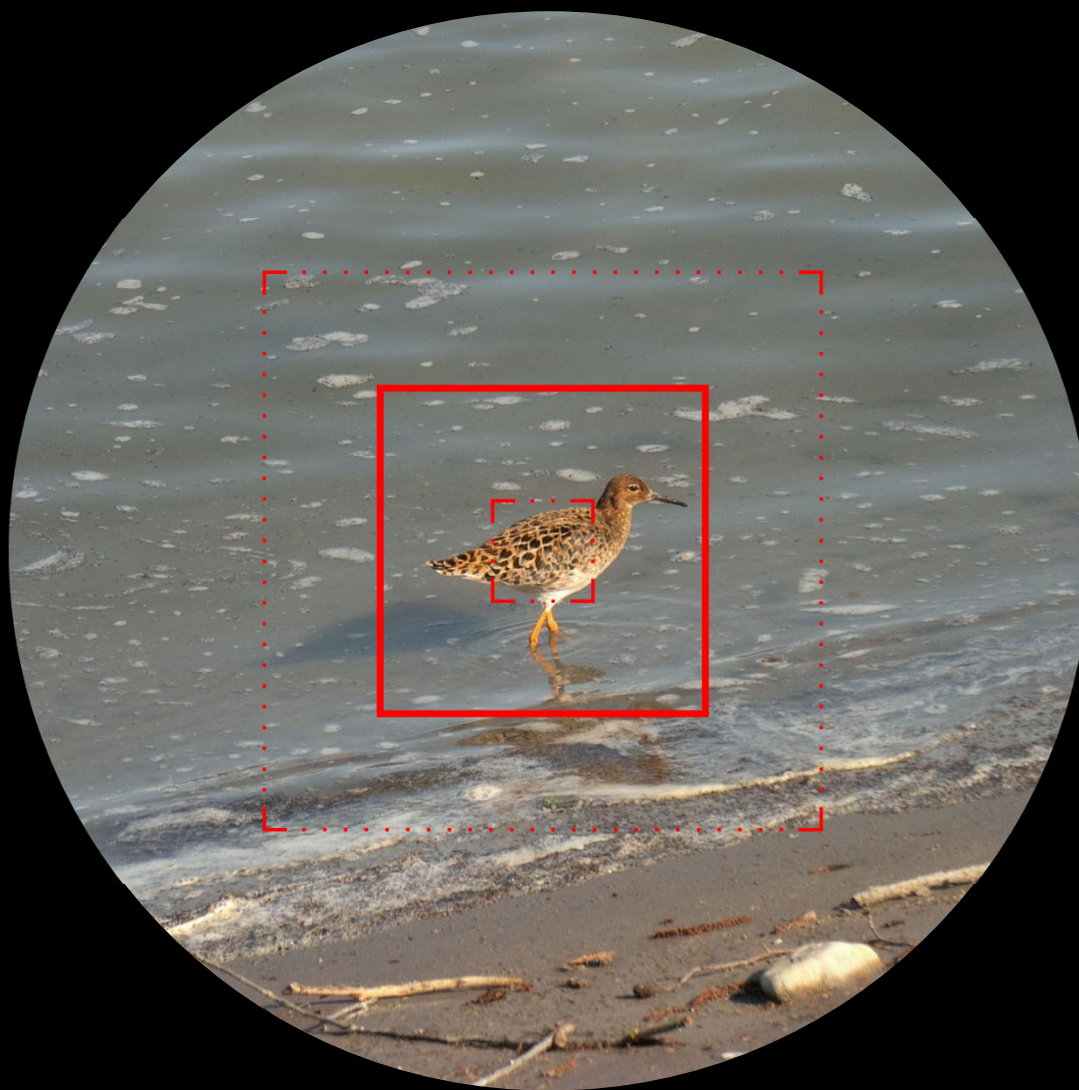


**Wanderfalko**  
Falco peregrinus



# FIRST PROTOTYPE







**Ruddy Turnstone**





**White Wagtail**

# FIRST RESULTS

Very first results looked promising → around 50% correct IDs



## Variety of challenges discovered

User expectation is quite high – premium optics vs. camera picture quality

Mismatch of what you see and what the system has available for doing IDs

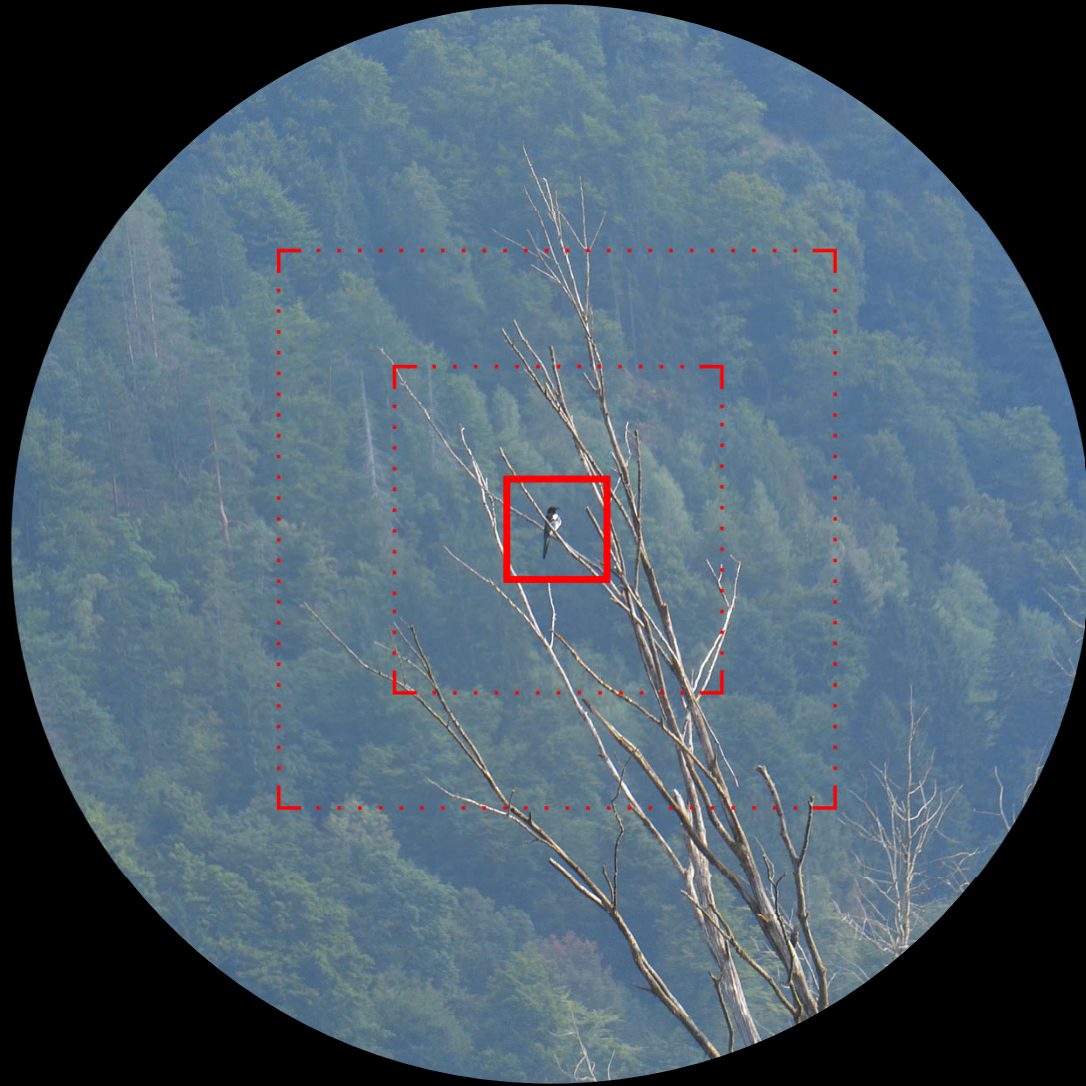


A lot of wrong IDs (small birds, poor quality pictures)

Shooting game factor



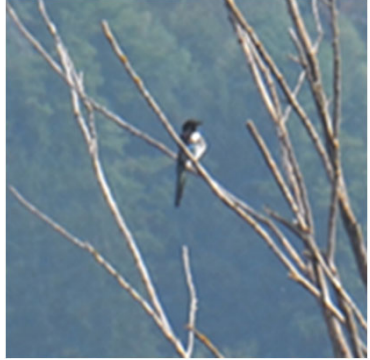






**No bird recognized**

# KEY LESSONS



Quantity of background has a direct influence on accuracy







**Eurasian Magpie**

# KEY LESSONS



Quantity of background has a direct influence on accuracy

Impossible to keep bird in the smallest reticle if not a professional bino user



Even the position of bird within crop has an impact



No possibility to sort out really bad pictures or if bird is (partially) hidden



# 2ND APPROACH





Crop



Detect



Crop







# DETAILS

- Detector feedback assists the user to start the ID process at the right moment



Detector inference time less than 200 ms needed – HW acceleration is a MUST

- Detector trained for bird and no bird situations



vs.



- Still two different reticles sizes needed



# USER EXPERIENCE









White Wagtail









**Eurasian Magpie**







**Bird not recognized**  
**Bird too small**

# TAKEAWAYS



# LESSONS

- Having a lot of high-quality data is a MUST, but not the ONLY thing that matters
- Conversion for HW acceleration is critical
  - only a few state-of-the-art models can be converted
  - causes non-negligible loss of accuracy
- End-to-End pipeline for validation; on Server and in App on device
- Balanced validation dataset (that represents user situations)
- User experience and providing feedback + advice is key



LAUNCH AT CES 2024









The world belongs to those who can see beauty.  
Experience the moment. SEE THE UNSEEN.

